



Document Solutions

> PRINT > COPY > SCAN > FAX

TASKalfa 3011i
TASKalfa 3511i

MONOCHROME MULTIFUNCTION
PRODUCT
FOR A4/A3 FORMAT

POWERFUL IN BOOSTING OFFICE PRODUCTIVITY



- Fast A4 copy/print speed up to 30/35 cpm.
- Superior scanning performance with dual scan speed up to 160/160 ipm A4 Mono/Color *.
- Speedy first copy time in just 3.6 seconds and warm up time 18 seconds.
- 320GB** hard disk capacity and 2GB RAM to meet heavy duty tasks without additional hard drive.
- Flexible with various paper handling systems and different capacity document processor combinations to meet different users' requirements.
- Convenient with inner Job Separator as standard.
- Environmentally friendly with low energy consumption due to intelligent device recovery system.

* Optional DP-7110 required.
**Optional for TASKalfa 3011i.



Born to be Extraordinary

KYOCERA Document Solutions is Extraordinary for

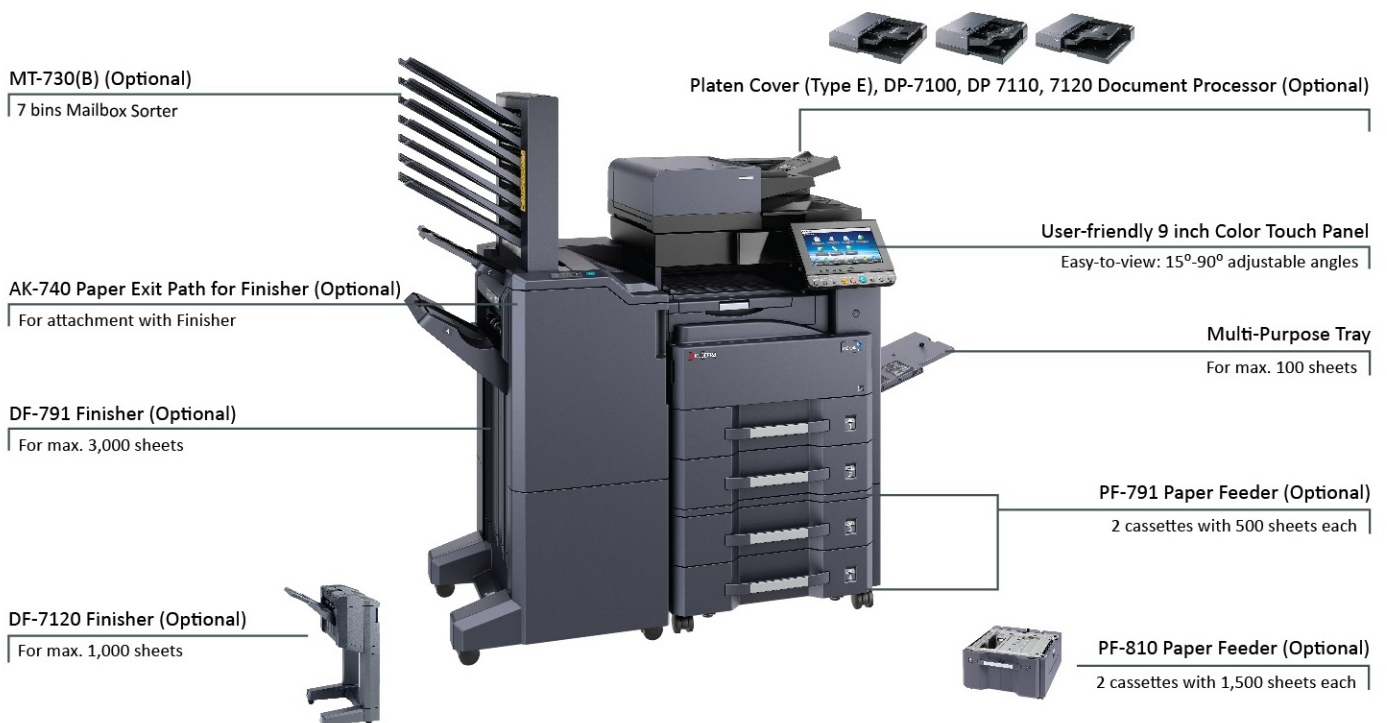
- Broad Range of Multifunction Devices and Printers
- Optimized Total Cost of Ownership (TCO)
- Reliable with Long Life Drum and Parts
- New and Advanced Technology

KYOCERA Document Solutions strives to be a company that contributes to the society and demonstrates “Customer First” principle by providing customers with maximum value to increase their satisfaction. By adhering to the mission of producing document management devices that take balance between “Economy” and “Ecology”, KYOCERA Document Solutions succeeds to develop document management devices with advanced technologies which help customers to optimize office productivity and efficiency at a low total cost of ownership and, at the same time, improving environmental performance.

Live up to the Highest Expectations

Designed specifically with the customer in mind, these models ensure superior performance, proven productivity and maximum efficiency. Through highly productive functionality, scalable integrated business applications and unsurpassed document handling capacity, these models incorporate the ability to manage day-to-day document imaging needs, as well as more complex task easily.

Convenient Paper Handling and Finishing Options



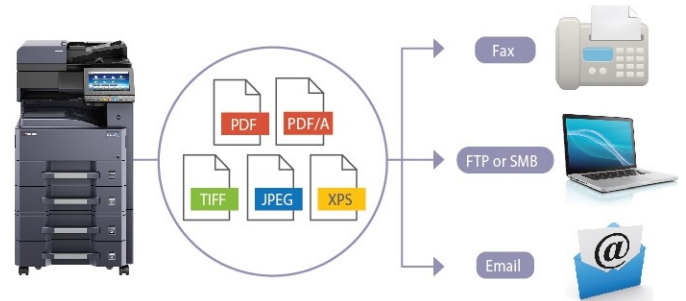


High Performance in COPY/PRINT/SCAN/FAX

Enhance Efficiency and Optimize Productivity

- **Skip Blank Page:** Blank page is skipped during making copies/scan at Document Processor to save unnecessary cost.
- **Dedicated Preset Copy Mode for Special Original Media:** Newspaper Copy, Technical Drawing Copy, ID Copy.
- **Prevent Bleed-thru:** Remove unwanted background when copying or scanning printed double-sized thin paper (e.g. newspaper, NCR paper, and magazine).
- **Carbon Copy:** Print an additional copy or copies of a document from a different media source or using a different media type.
- **USB Scan to/Direct Print:** Scan to or print directly from USB Memory in PDF, C-PDF, TIFF, JPEG or XPS format.
- **Thumbnail Image Preview:** Easy to check image preview when Stamp function or Form Overlay function is used.
- **Scan to Searchable PDF function (Optional):** Scan original paper document, separates texts and images via OCR function to convert texts into text data and composes PDF by combining the images and the text data. This facilitates reuse of PDF file and easily accessible using the search function in PDF file format.
- **High Compressed PDF Size:** Adopt new image analysis technology to achieve high compressed PDF to smaller file size.

- **Scanned Image File Size Check:** Check the actual scanned document size does not exceed limit before actual sending to e-mail.
- **FTP/SMB/Email/Fax Multi-Sending:** Send document to different destinations (email addresses, folders, etc.) in a single scan operation.



- **Simple Fax Forwarding:** Forward any incoming fax to other destinations by Email, SMB or FTP (Optional).



- **i-FAX Sending (Optional):** Send and receive i-FAX without the mail service by installing Direct SMTP function.
- **Job Skip:** Automatically prioritize the error print job to avoid machine come to a halt in case of

1. Paper empty in specific tray
2. Mismatched paper size
3. Mismatched media type

Received Order Order of Received JOBS					JOB Execution Order Order of Printed JOBS				
Sequence	Job	Paper Size	Status		Sequence	Job	Paper Size	Status	
1	DOC1	A3	NG	→	1	DOC2	A4	OK	
2	DOC2	A4	OK		2	DOC4	A4	OK	
3	DOC3	A5	NG		3	DOC1	A3	NG	
4	DOC4	A4	OK		4	DOC3	A5	NG	

- **Job Finish Notice:** Send email notification to specified user when a copy/scan job is completed.





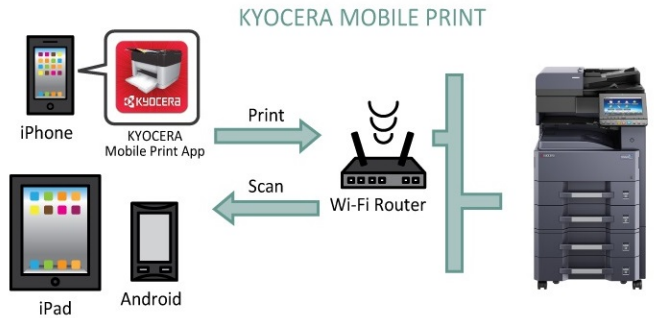
Easily Accessible

- **Intuitive Panel:** Excellent clarity 9 inch color touch panel display with swivel type operability similar to smart phone and tablet and tiltable from 15 degree to 90 degree.
- **Convenience to use Keypad:** With on-screen virtual numeric keypad (hardware keypad is optional), users can type in with ease.
- **Home Screen:** All commonly used functions and applications are found on default Home Screen. The Home Screen can be customized easily to meet different user (or Group User) needs for immediate access to commonly used functions.
- **Printer Driver's Quick Print Tab:** Create and save frequently used custom profiles as graphic icons to allow programming of complex jobs in one click.
- **Various Paper Handling System and Different Capacity Document Processor Composition:** Customers can choose different paper capacity systems and document processor types that best suit their budget and needs.
- **Custom Box:** Ease-of-use Custom Box provides long term job storage at device, allowing users to securely print and store jobs on the device and output them when required.
- **Low Power Consumption Mode:** Adopt spot conduction for intelligent recovery system by activating only the areas of the device required for the operation. Customers can choose recovery priority mode or power priority mode based on their own needs.

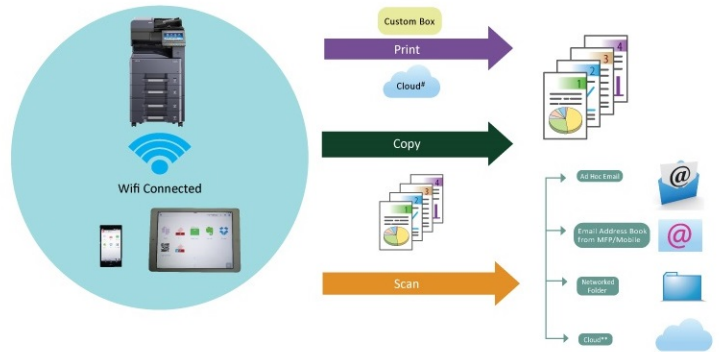


Robust Mobile & Cloud Solutions

- KYOCERA Mobile Print:** An app-based solution that enables users to simply and conveniently print documents, web pages, and images on demand from virtually anywhere, on their Apple and Android smartphone and tablet devices to select KYOCERA MFPs and printers. Users can also scan files and images from same MFPs to their mobile devices. Our devices also support AirPrint for iPhone and iPad.

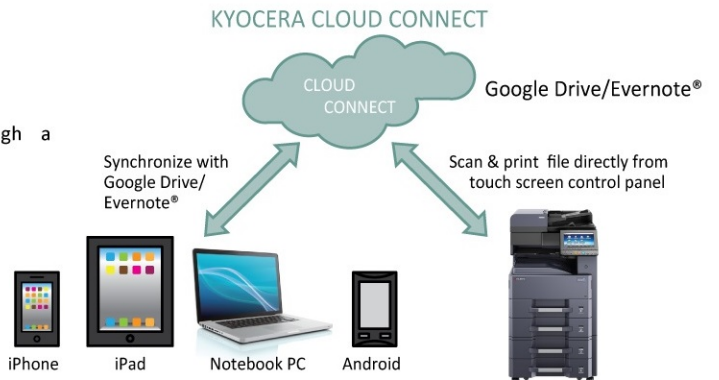


- KYOCERA MyPanel:** Use smartphone or tablet to connect a compatible networked KYOCERA printing device on local Wi-Fi network wirelessly. Users can perform COPY/PRINT/SCAN from Custom Box or Cloud# by mobile devices with personalize settings.



#Cloud Application Supported: Dropbox, Evernote, OneDrive

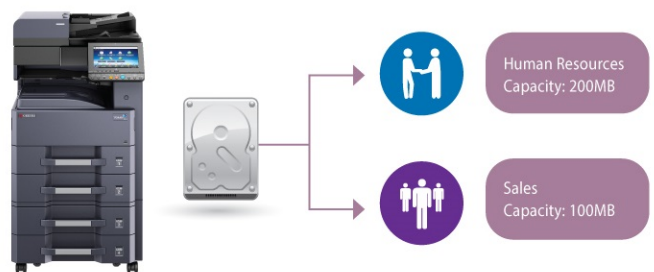
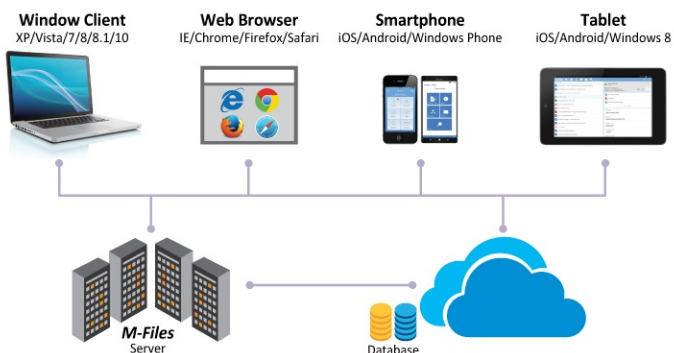
- KYOCERA Cloud Connect (Optional):** Retrieve and print files in Google Drive and Evernote®, a cloud service provider, directly from any KYOCERA HyPAS-enabled MFPs. Users can even upload scanned files directly to Google Drive and Evernote® Cloud – directly from the MFP, without going through a computer.
- Support Gmail and Hotmail Public Mail Services:** Scan documents to email accounts from device and automatically print documents directly from accounts.
- Support WiFi Direct:** Support IB-35 Wireless Lan (Optional), makes print/scan via AirPrint/Google Cloud Print/Mopria/KYOCERA Mobile Print/KYOCERA





Connect with Security

- **Private Print:** Release print job at the device by entering a preset four-digit access code when making a print at KYOCERA KX Driver.
- **Password Protection Setting:** Allow administrator to set Password Policy to limit user access to designated capacity.
- With the aid of **Network Authentication**, IT Department can manage user authentication easily by incorporating with centralized Authentication Server (NTLM, Kerberos, KYOCERA Net Policy Manager*).
- **FAX Memory Overwrite (Optional):** Erase FAX memory after sending or receiving for confidentiality.
- **M-Files (Optional):** Manage all information e.g. documents, projects and business processes etc and adds intelligence by combining it with information from other systems (like SharePoint, Salesforces and SAP). This ensures you always find what you need, no matter what system you are using.



- **Security Watermark:** Distinguish original from copies and provides protection for sensitive document against duplication.
- **KYOCERA Data Security Kit (Optional):** Encrypt data before storing in the hard drive and automatically overwrite all data stored in the hard drive when the data becomes unnecessary.



Better Environment, Better Tomorrow

Energy savings design

- **Weekly Timer:** Allow administrator to preset the machine on and off time to maximize power savings.
- **EcoPrint:** Flexible EcoPrint setting to consume less energy and toner.
- **Energy Saver:** 1.0w or less power consumption at Priority Energy Saver Mode.

Minimize impact to the environment

- Leading long life Mega Surface Amorphous Silicon (a-Si) Drum, developer and replacement parts.
- Large capacity toner for maximum uptime and less wastage.
- Parts for Recycling.
- Non-toxic Materials.
- Quiet operation design for a comfortable working environment.



Eco Mark (Japan)



EcoLeaf Environmental Label (Japan)



Law on Promoting Green Purchasing (Japan)

KYOCERA Document Solutions has been actively promoting the acquisition of various environment labels, aiming to provide products that are safe and comfortable for our customers to use and have minimal environmental impact.

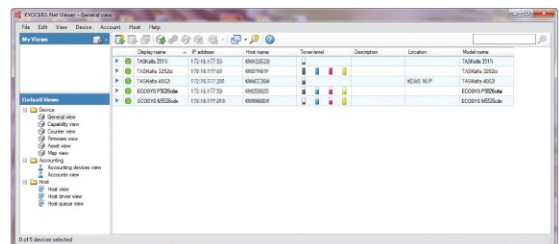
Make Management Easier

Smart utilities for managed print and minimize related device management costs.

- **KYOCERA Command Center RX:** By using a web browser, the authorized administrator can access the built-in KYOCERA Command Center RX and check the operation status of the device, toner level, paper availability, as well as change settings related to security, network printing and advanced network setting etc.



- **KYOCERA Net Viewer:** A comprehensive network management tool used to monitor, maintain, and update up to 100 network printing devices locally and remotely. Through KYOCERA Net Viewer, administrators can simply install and update firmware on all KYOCERA connected devices while easily monitoring printed pages, device configuration, accounting, toner usage, and alerts. By implementing KYOCERA Net Viewer, the manpower required to monitor connected devices is greatly reduced.



- **KYOCERA Net Manager (Optional):** Protect confidential data, manage & control the overall output (copy/print/scan) and get detailed reports. Users can keep an overview of personal printing jobs with web browser. It greatly simplifies scanning processes as it automatically displays a set of personalized options.

If users add the Card Authentication Kit (Optional) for KYOCERA Net Manager, they are able to swipe ID Card to get print document directly. User Administrator can also set the IC Cards to allow quick and secure access with pre-defined user restrictions such as output quota.



			Main Specifications		
Model			TASKalfa 3011i		TASKalfa 3511i
Main Function			Copy, Print, Scan, Fax (Optional)		
Writing Method			Semiconductor Laser		
CPU			T1024 (Dual Core) 1.0 GHz		
Print Speed (A4)			30 ppm		35 ppm
Scanning Speed (A4) 300dpi	DP-7100 (Mono/Color)	Simplex	80/80 ipm		
		Duplex	48/48 ipm		
Scanning Speed (A4) 300dpi Dual Scan	DP-7110 (Mono/Color)	Simplex	80/80 ipm		
		Duplex	160/160 ipm		
Scanning Speed (A4) 300dpi	DP-7120 (Mono/Color)	Simplex	48/48 ipm		
		Duplex	15/15 ipm		
Memory			Standard 2GB (Max. 2GB)		
SSD/HDD Capacity			32GB (Std)/ 320GB (Opt)		8GB (Std)/ 320GB (Std)
Warm Up Time			18 seconds		
Paper Capacity	Standard		2 x 500 sheets (Cassette) + 100 sheets (MPT)		
	Maximum		4,100 sheets (Main Unit + PF-810 + MPT)		
Paper Size	Cassette		Min. A5R - Max. A3 (Ledger)		
	MPT		Min. A6R - Max. A3 (Ledger)		
Paper Weight	Cassette		60 - 163 g/m ²		
	MPT		45 - 256 g/m ²		
Duplex Printing			Paper size: A5R - A3 / Ledger; Paper weight: 60 - 160 g/m ²		
Output Capacity			250 sheets + 50 sheets (with Inner Job Separator) face-down		
Control Panel			9 inch Color Touch LCD Panel		
Dimension (W x D x H) (Main Unit)			594mm x 696mm x 680mm		
Weight (Main Unit)			Approx. 58 kg		
Power Consumption (Standard configuration)	Copy/Print Mode		620W or less		660W or less
	Stand-by Mode		120W or less		
	Energy Saver		1.0W or less		
Noise (ISO7779/ISO9296)	Copy/Print Mode		66.2dB(A)		66.7dB(A)
	Stand-by Mode		43dB(A)		
Copy Functions (Standard)					
Copy Size			Max. A3 (Ledger) - Min. A6R		
Resolution			600 x 600 dpi		
First Copy Time			3.6 seconds		
Zoom Ratio	Manual		25% - 400% (1% per Step)		
	Pre-defined		3R4E		
Multiple Copy			1 - 999		
Print Functions (Standard)					
Resolution			600 x 600 dpi; 9,600 x 600 dpi level		
PDL			PRESCRIBE, PCL6 (PCL-5e, PCL-XL), KPDL3 (PostScript 3 compatible), XPS, OpenXPS, PDF Direct Print		
First Print Out Time			4.2 seconds		
Supported Protocol			NetBEUI, FTP, Port 9100, LPR, IPP, IPP over SSL, WSD Print		
Operating System Supported			Windows Server 2003, Windows Server 2008, Windows Server 2008 R2, Windows Server 2012, Windows XP, Windows Vista, Windows 7, Windows 8, Windows 10; Apple Macintosh OS 10.5 or later; Linux		
Interface			USB2.0 High Speedx1; 1000BASE-T/100BASE-TX/10BASE-T; USB Host interface (USB Host) x4; NFC TAG x1		
USB Memory Printing			Standard		
USB Memory Printing Format			TIFF, JPEG, PDF, XPS		
Mobile Printing			AirPrint, Mopria, KYOCERA Mobile Print		
Scan Functions (Standard)					
Color Selection			Auto Color (Color/Gray); Auto Color (Color/B&W); Full Color; Grayscale; Black & White		
Resolution			600dpi, 400dpi, 300dpi, 200dpi, 200x100dpi, 200x400dpi		
File Format			TIFF, JPEG, XPS, OpenXPS, PDF (MMR/JPG/High-compression PDF), PDF/A, Searchable PDF (Optional)		
Image Type Mode			Text, Photo, Text + Photo		
Transmission Type			Scan to SMB; Scan to E-mail; Scan to FTP or FTP over SSL; Scan to USB; TWAIN Scan; WSD Scan		
Address Storage			2,000 addresses (Common address list), 500 groups (Group address list)		
Fax Functions (Optional)					
Original Size			Max. A3 (Ledger) - Min. A5 (Statement)		
Coding Method			MMR, MR, MH, JBIG		
Transmission Speed			33.6 kbps		
Memory			Standard: 12MB		
G3 FAX/ Network FAX			Yes		
Dual Fax			Yes (Fax System 12 x 2 units required)		
Consumables & Options					
Toner Kit			TK-7119		TK-7219
Maintenance Kit			MK-7109		
Platen Cover			Platen Cover Type E		
Document Processor			DP-7100: 140 sheets RADF Type; DP-7110: 270 sheets One-path duplex scan Type; DP-7120: 50 sheets RADF Type		
Paper Feeder			PF-791: 500 sheets x2 (A4/Letter); PF-810: 1,500 sheets x2 (A4/Letter)		
Finisher			AK-740: Paper Exit Path for Finisher; DF-7120 : 1,000 sheets Finisher; DF-791: 3,000 sheets Finisher; PH-7C: Punch Unit; MT-730(B): 7 bins Mailbox Sorter; SH-12: Staple for DF-791/DF-7120		
Fax System			Fax System 12		
Internet FAX			Internet FAX Kit(A)		
Data Security			Data Security Kit(E)		
Card Authentication			Card Authentication Kit(B)		
Gigabit Ethernet Board			IB-50		
Wireless LAN Interface			IB-35 (802.11 b/g/n/Wireless LAN/WiFi Direct)		
Embedded OCR			Scan Extension Kit(A)		
Storage Device			HD-12: HDD 320GB (TASKalfa 3011i only)		
Numeric Key Pad			NK-7100		



Company details

KYOCERA Business Partner

*KYOCERA Document Solutions does not warrant that any specifications mentioned will be error-free. Specifications are subject to change without notice. Information is correct at time of going to press. All other brand and product names may be registered trademarks or trademarks of their respective holders and are hereby acknowledged.