

imageRUNNER
1643iF II / 1643i II

Canon

Delighting You Always



The new imageRUNNER 1643iF II & 1643i II
**ELEVATING WORKFLOW
EFFICIENCY**

Print 43 ppm

5-inch Touch Panel

Feed up to 2,300 sheets

Compact Footprint

Business Can Be Simple

Higher productivity with enhanced smart touch panel



- ✓ High-speed printing of 43 ppm
- ✓ 2-sided scanning capability with up to 70 ppm
- ✓ High-capacity paper feed of up to 2,300 sheets
- ✓ Rich media support including A5 & A6 paper sizes

Productivity

- ✓ 5-inch colour touch panel
- ✓ One-touch execution for convenience
- ✓ Small footprint for desktop configuration
- ✓ Function customisation for different types of verticals

Usability

- ✓ Protection from information leakages and external attacks
- ✓ Operate MFD with mobile wirelessly
- ✓ Reduce risk of information leakages with authentication

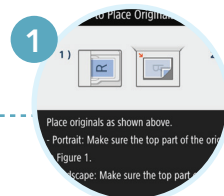
Security & Mobility



Bringing security to the next level

imageRUNNER 1643i II series comes equipped with TLS encrypted communication, IPSec communication as well as IEEE 802.1X to enhance network security and device protection through system verification.

Better visibility & operability with 5-inch colour Touch Panel



- Illustration display**
- Easy navigation of functions through visual guides displayed on the touch panel.



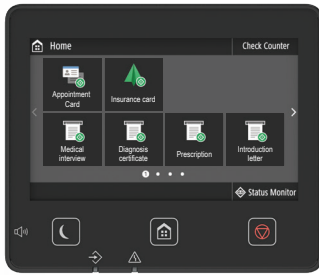
- On-screen keyboard**
- Greater convenience when entering texts.



- Thumbnail preview**
- To ensure the correct files are chosen to reduce paper wastage.

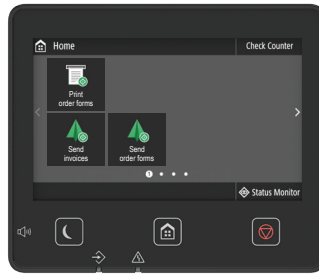
Improve work efficiency with one-touch solutions from Application Library

Save time and improve work efficiency by automating routine tasks with customisable buttons, allowing various tasks to be executed with just a click of a button.



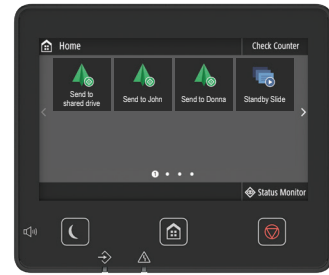
For Hospitals / Clinics

- Photocopy appointment cards.
- Save copies of health insurance cards.
- Retrieve prescription and medical referral letter.



For Retail Stores

- Print order forms.
- Send invoices to customers.
- Send order forms via email.



For Small Offices

- Send to shared folders.
- Display bulletin board in screen saver mode.
- Send reports to head office via email.

Easily digitise documents for quicker archiving & space saving



Searchable PDF function

- Canon's technology processes the scanned file with its OCR function, recognises the text in the file and makes it text-searchable.



Compact PDF files

- Scans texts and photos in high quality while keeping the file size small in high compression mode.

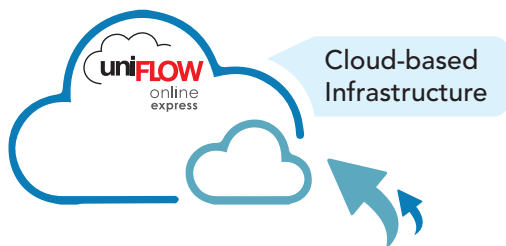


Send function

- Send to multiple destinations such as email or network folder.

Cloud-based print management solution

- Provides print, copy, scan and fax usage reports.
- Offers greater usage and print optimisation through reporting and usage analytics.



Track Print, Scan and Copy costs



SPECIFICATIONS

Main unit	iR1643iF II	iR1643i II
Machine type	Monochrome A4 Laser Multifunctional	
Core functions	Print, Copy, Scan, Send and Fax	Print, Copy, Scan and Send
Control panel	12.7 cm (5-inch) TFT LCD WVGA Colour Touch panel	
Memory	Standard: 1.0GB RAM	
Storage	eMMC: 2GB	
Interface connection	Network	1000Base-T/100Base-TX/10Base-T, Wireless LAN (IEEE 802.11 b/g/n), Wi-Fi Direct Connection
	Others	USB 2.0 (Host) x2, USB 2.0 (Device) x1
Memory media	USB Memory	
Network security	TLS 1.3, IPsec, IEEE802.1X authentication, SNMPv3, Firewall, Functionality (IP/MAC Address Filtering), Enabling/Disabling (Network Applications, Remote UI, USB Interface), G3 FAX separation from LAN, USB Port separation from LAN	
Document security	Print Security (Secure Print, uniFLOW Secure Print*), Scan Security (Encrypted PDF, Device Signature PDF/XPS), Send Data Security (Restricted E-mail/File send functions, Security Confirming FAX number, Allow/Restrict Fax Driver Transmissions, Allow/Restrict Sending from History) *1 Requires optional uniFLOW Online / uniFLOW	
Paper supply capacity (A4, 80gsm)	Standard	Paper Cassette: 550 sheets Multi-purpose tray: 100 sheets
	Maximum	2,300 sheets (with PAPER FEEDER PF-C1x3)
Paper output capacity (A4, 80gsm)	Standard: 150 sheets	
Toner (Estimated yield @ 5% coverage)	Toner T06 Black: 20,500 impressions (A4)	
Supported media sizes	Upper cassette 1	Standard size: A4, B5, A5, A5R, A6 Custom size: Minimum 105.0 x 148.0 mm up to 216.0 x 355.6 mm
	Multi-purpose tray	Standard size: A4, B5, A5, A5R, A6, Index Card, Envelopes [No. 10 (COM 10), Monarch, ISO-C5, DL] Custom size: Minimum 76.2 x 127.0 mm up to 216.0 x 355.6 mm
Supported media weights	Upper cassette 1	60 to 120 gsm
	Multi-purpose tray	60 to 199 gsm
	Duplex	60 to 120 gsm
Warm-up time	From power on: 14 seconds or less* *Time from device power-on until copy ready (not print reservation) From sleep mode: 4 seconds or less	
Dimensions (W x D x H)	480 x 464 x 452 mm	
Installation space (W x D)	480 x 905 mm (With cassette open)	
Weight	Standard: Approx. 20.0 kg (Including toner)	

Print specifications		
Print speed (BW)	1-sided : Up to 43/43 ppm (A4) 2-sided : Up to 36/36 ppm (A4)	
Print resolution (dpi)	600 x 600	
Page description languages	Standard	UFR II, PCL6, PCL5, Adobe® PostScript® 3™
	Optional	Adobe® PostScript® 3™
Direct print	Direct printing available from USB memory and LPR Supported file types: TIFF, JPEG, PDF and XPS (only LPR)	
Printing from mobile and cloud application	Apple AirPrint, Canon PRINT Business, Mopria, and uniFLOW Online	
Fonts	PCL fonts: 93 Roman, 10 Bitmap fonts, 2 OCR fonts, Barcode fonts PS fonts: 136 Roman	
Operating system	UFR II: Windows® 8.1/10/Server 2012/Server 2012 R2/Server 2016/Server 2019, MAC OS X (10.11 or later) PCL: Windows® 8.1/10/Server 2012/Server 2012 R2/Server 2016/Server 2019 PS: Windows® 8.1/10/Server 2012/Server 2012 R2/Server 2016/Server 2019, MAC OS X (10.11 or later)	

Copy specifications	iR1643iF II	iR1643i II
Copy speed	1-sided : Up to 43/43 ppm (A4) 2-sided : Up to 36/36 ppm (A4)	
First-copy-out time (BW, A4)	Platen: Approximately 6.3 seconds or less ADF: Approximately 6.4 seconds or less	
Copy resolution (dpi)	600 x 600	
Multiple copies	Up to 999 copies	
Copy density	Automatic or Manual (9 Levels)	
Magnification	25% - 400% (1% Increments) Preset reduction/enlargement: 25%, 50%, 70%, 81%, 86%, 100%, 115%, 122%, 141%, 200%, 400%	

Scan specifications	
Type	1 PDS
Document feeder paper capacity	A4 - 50 sheets
Supported media sizes	Sheet media size: A4R, B5R, A5R, A6R Custom size: 105 x 128 mm to 215.9 x 355.6 mm
Scan speed (ipm: BW / Colour; A4)	Copy (600dpi): 1-sided Scanning: 20 2-sided Scanning: 34 Send (300dpi): 1-sided Scanning (BW / CL): 38 / 13 2-sided Scanning (BW / CL): 70 / 26
Scan resolution (dpi)	Copy: Up to 600 x 600 Send: (Push) Up to 300 x 600, (Pull) Up to 600 x 600 Fax: Up to 400 x 400
Full scan specifications	ScanGear MF For both TWAIN and WIA

Send specifications	
Destination	E-mail / Internet FAX (SMTP), SMB, FTP
Address book / Speed dials	LDAP (50) / Local (300) / One touch (281)
Send resolution (dpi)	Push: 192 x 204 (I-FAX), 300 x 300 (Email / SMB / FTP) Pull: 50 x 50, 75 x 75, 150 x 150, 200 x 200, 300 x 300, 400 x 400, 600 x 600 *Color mode is black and white only
Communication protocol	File: FTP (TCP/IP), SMB 3.0 (TCP/IP) Email / iFax: SMTP (Send), POP3 (Receive)
File format	TIFF, JPEG*, PDF (Compact, Searchable, Encrypted, Digital Signature) *Single page only

Fax specifications		
Maximum number of connection lines	1	N/A
Modem speed	Super G3: 33.6 kbps G3: 14.4 kbps	N/A
Compression method	MH, MR, MMR, JBIG	N/A
Resolution (dpi)	400 x 400 (Ultrafine), 200 x 400 (Superfine), 200 x 200 (Fine / Photo), 200 x 100 (Normal)	N/A
FAX memory	Up to 512 pages	N/A
Speed dials	Max. 281	N/A
Group dials / Destinations	Max. 299 dials	N/A
Sequential broadcast	Max. 310 addresses	N/A

Environmental specifications	
Power source	AC220-240V: 3.9A, 50 / 60Hz
Power consumption	Maximum: Approx. 1,420W or less

Paper supply options	
Paper feeder PF-C1	Paper Capacity: 550 sheets (80 gsm) Paper Size: A4, B5, A5, A5R, A6 Custom size: 105.0 x 148.0 mm to 216.0 x 355.6 mm Dimensions (W x D x H): 480 x 464 x 842*mm (*Attached to the main unit) Weight: Approx. 4.0 kg

Other optional accessories	
Copy Card Reader-F1, Copy Card Reader Attachment-J1, PS Printer Kit-CB1 AS, Barcode Printing Kit-E1, Copy Control Interface Kit-C1	