



Document Solutions

> PRINT > COPY > SCAN > FAX

TASKalfa 7002i

TASKalfa 8002i

TASKalfa 8052ci

COLOR/MONOCHROME
MULTIFUNCTION PRODUCT
FOR A4/A3 FORMAT

ENFORCE

MULTIFUNCTIONAL POWER AND MOBILITY OFFICE



- High image quality with 1,200dpi printing resolution.
- Fast first copy time (mono: 4.8 seconds; color: 5.9 seconds) *.
- 320GB hard disk capacity and 4.5GB RAM to meet heavy duty tasks without additional hard drive.
- Support A6 original scanning from Document Processor with dual scan speed up to 220/220 ipm A4 Mono/Color.
- Support size 12" x 18" (304mm x 457mm) & 300g/m² paper.
- Support Banner Print and Scan.

*For TASKalfa 8052ci





Born to be Extraordinary

KYOCERA Document Solutions is Extraordinary for

- Broad Range of Multifunction Devices and Printers
- Optimized Total Cost of Ownership (TCO)
- Reliable with Long Life Drum and Parts
- New and Advanced Technology

KYOCERA Document Solutions strives to be a company that contributes to the society and demonstrates "Customer First" principle by providing customers with maximum value to increase their satisfaction. By adhering to the mission of producing document management devices that take balance between "Economy" and "Ecology", KYOCERA Document Solutions succeeds to develop document management devices with advanced technologies which help customers to optimize office productivity and efficiency at a low total cost of ownership and, at the same time, improving environmental performance.

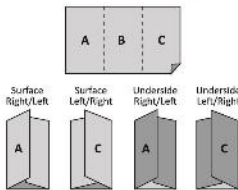
Advanced Functionality

Designed with wide screen touch panel and simple operation, these multi-faceted devices offer impressive speed, large output capacity and bring high quality color print for business. They are ideal for handling day-to-day document and streamlining workflow with sophisticated KYOCERA business applications.

Superior Technology



MT-730(B) (Optional)
7 bins Mailbox Sorter

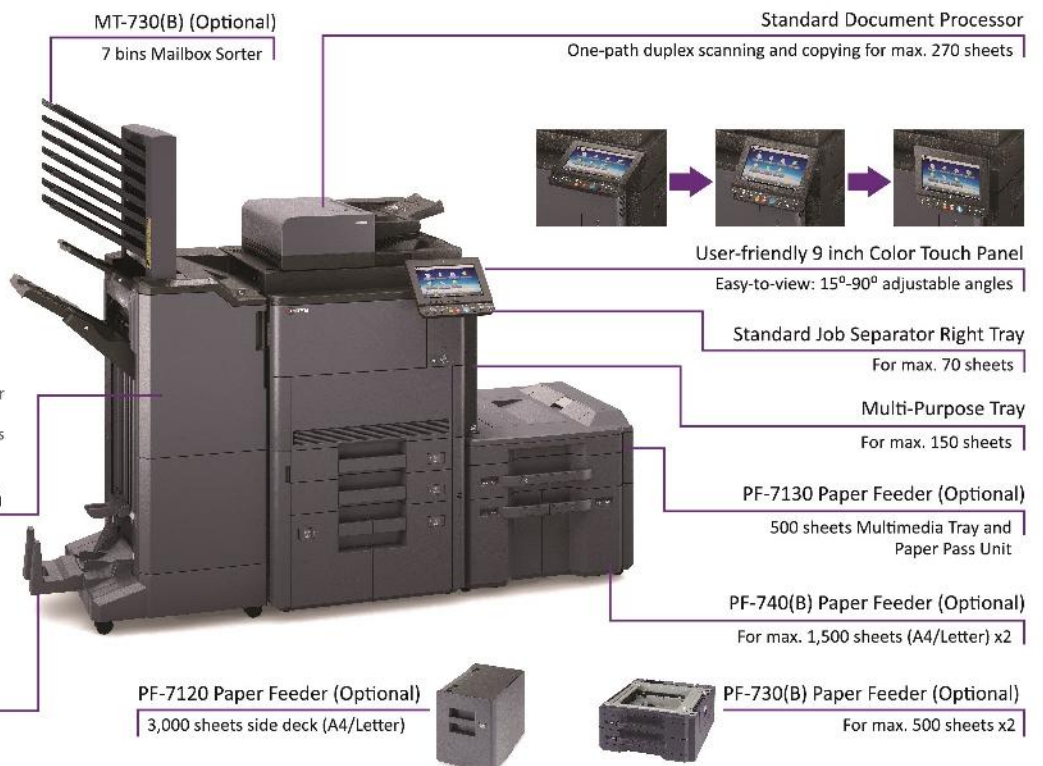


- Allow automatic stapling, manual stapling*** and booklet finishing**** (Optional).
- Provide a variety of Folding Method (Center Fold or Tri-Fold****).
- Tri-Fold: 1 sheet (max. 256g/m²) to 5 sheets (max. 90g/m²).

DF-7110: Document Finisher (Optional)
For max. 4,000 sheets

BF-730: Booklet and Tri-Folding Unit (Optional)

***Optional DF-7110 is required.
**** Optional DF-7110 & BF-730 are required.





Superior Performance in COPY/PRINT/SCAN/FAX

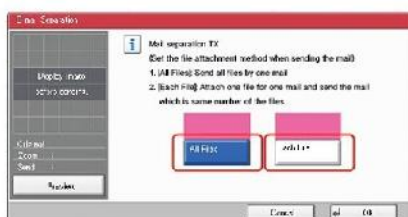
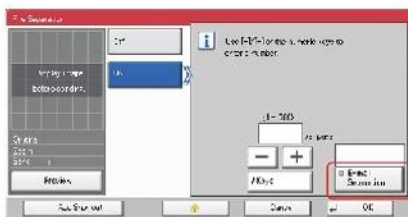
- **Test Copy:** Reduce miscopy when copying large volume by using the Test Copy mode.
- **Duplex Preview:** Display both front and back sides before printing (Copy/Box Print function).
- **Skip Blank Page:** Blank page is skipped during making scans/copies to save unnecessary cost.
- **Dedicated Preset Copy Mode for Special Original Media:** Newspaper Copy, Technical Drawing Copy, ID Copy, Highlighter Copy (reproduce fluorescent colors clearly).



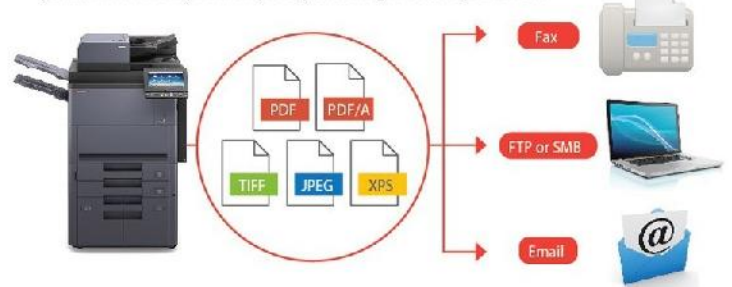
- **Prevent Bleed-thru:** Remove unwanted background when copying or scanning printed double-sized thin paper (e.g. newspaper, NCR paper, and magazine).
- **Carbon Copy:** Print an additional copy or copies of a document from a different media source or using a different media type.
- **Banner Send & Print:** Scan and produce banner with various paper weight in-house anytime in need (One-sided only).



- **Tandem Print:** Print same job quickly with two MFPs (same models) simultaneously.
- **Customize Scan Split:** Scan by split at specified page and allow send all scan files via one email or send files separately by emails.



- **USB Scan to/Direct Print:** Scan to or print directly from USB Memory in PDF, PDF/A, TIFF, JPEG or XPS format.
- **Scanned Image File Size Check:** Check the actual scanned document size does not exceed limit before actual sending to e-mail.
- **FTP/SMB/Email/Fax Multi-Sending:** Send document to different destinations (email addresses, folders, etc.) in a single scan operation.

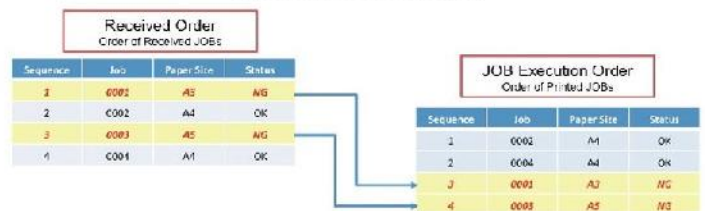


- **Simple Fax Forwarding:** Forward any incoming fax to other destinations by Email, SMB or FTP (Optional).



- **i-FAX Sending (Optional):** Send and receive i-FAX without the mail service by installing Direct SMTP function.
- **Job Skip:** Automatically prioritize the error print job to avoid machine come to a halt in case of

1. Paper empty in specific tray
2. Mismatched paper size
3. Mismatched media type



- **Job Finish Notice:** Send email notification to specified user when a copy/scan job is completed.





Maximize Efficiency

- **Intuitive navigation:** Excellent clarity 9 inch color touch panel display with swivel type operability similar to smart phone and tablet and tiltable from 15 degree to 90 degree.
- **Convenience to use Keypad:** With on-screen virtual numeric keypad (hardware keypad is optional), users can type in with ease.
- **Home Screen:** All commonly used functions and applications are found on default Home Screen. The Home Screen can be customized easily to meet different use (or Group User) needs for immediate access to commonly used functions.
- **Printer Driver's Quick Print Tab:** Create and save frequently used custom profiles as graphic icons to allow programming of complex jobs in one click.
- **Custom Box:** Ease-of-use Custom Box provides long term job storage at device, allowing users to securely print and store jobs on the device and output them when required.



Superior Quality

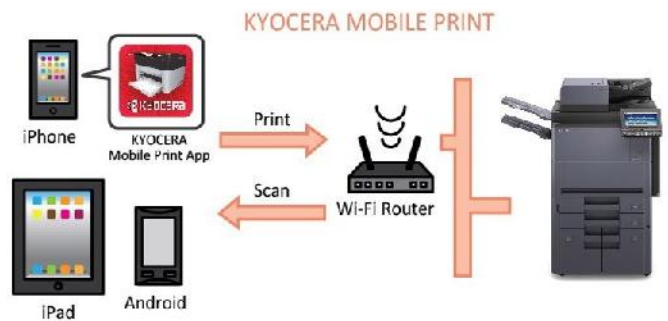
- Powerful color performance*
 - Vibrant color* with 1,200 x 1,200 dpi print resolution.
 - Contrast selection with copy/scan.
 - Multiple Image Adjustment Tools for optimal output:
 - **Color Optimizer at KYOCERA KX Driver*:** Allow users to adjust the pixels near the color value or color space of defined areas instead of the entire image by selecting 2 from 3 parameters (Hue, Light, Saturation) and add up to 10 colors in each adjustment settings.
 - **One-Touch Color Image Adjustment*:** Total 9 photo adjustment modes to select optimal settings for photo image (Portrait; Blue Scenery; Green Scenery; Vivid; Soft; Sharp; Smooth; Light; Heavy).
 - **Print Gray with Black Toner*:** Improve text recognition and decreases color shadowing to reproduce accurate grayscale image.



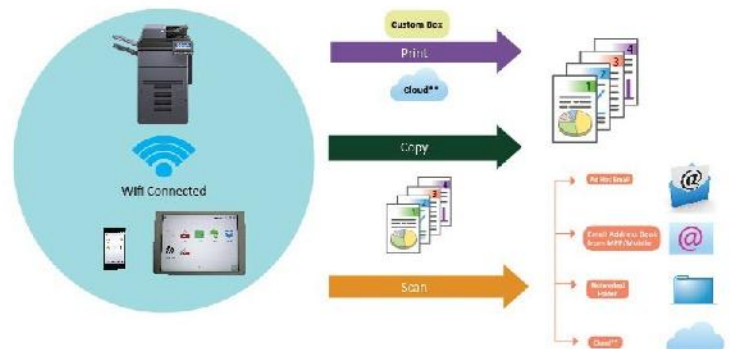


Transform Business with KYOCERA Solutions

- KYOCERA Mobile Print:** An app-based solution that enables users to simply and conveniently print documents, web pages, and images on demand from virtually anywhere, on their Apple and Android smartphone and tablet devices to select KYOCERA MFPs and printers. Users can also scan files and images from same MFPs to their mobile devices. Our devices also support AirPrint for iPhone and iPad.

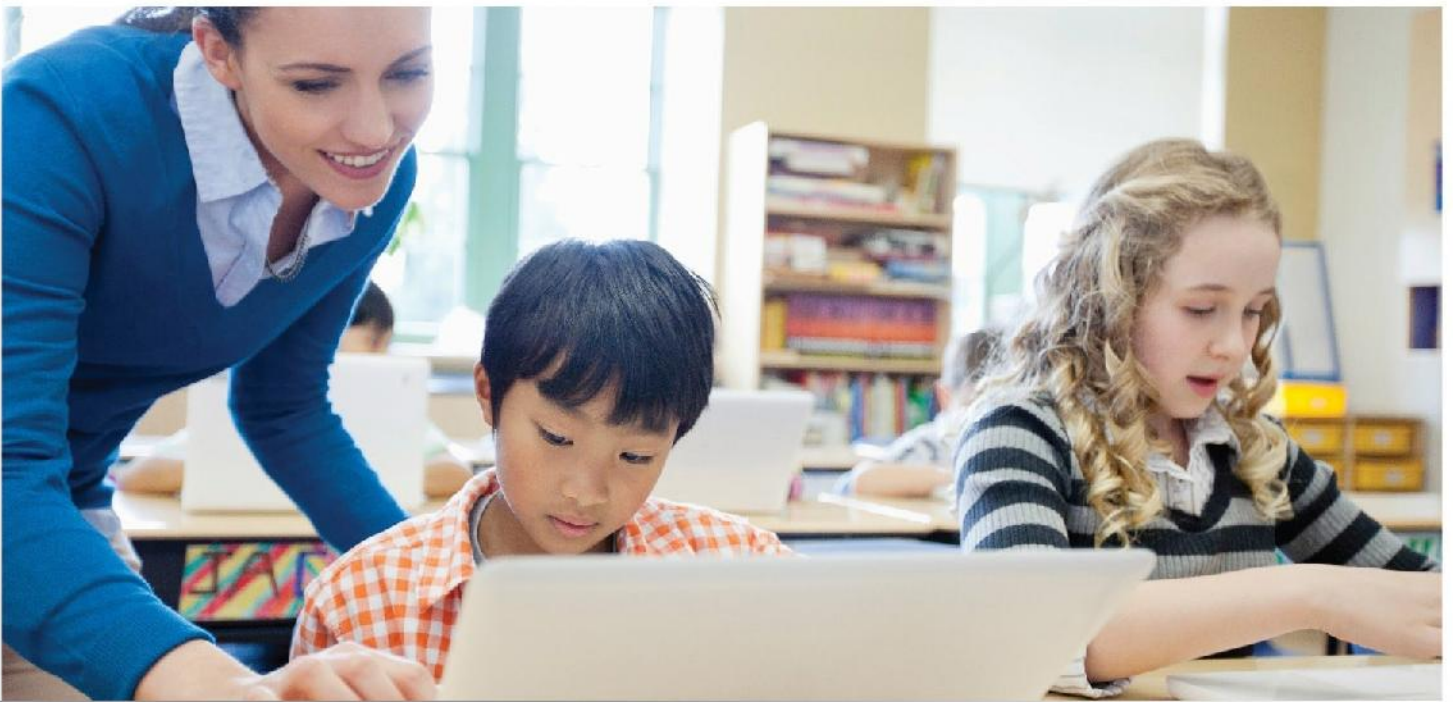


- KYOCERA MyPanel:** Use smartphone or tablet to connect a compatible networked KYOCERA printing device on your local Wi-Fi network wirelessly. Users can perform COPY/PRINT/SCAN from Custom Box or Cloud^{***} by mobile devices with personalized settings.



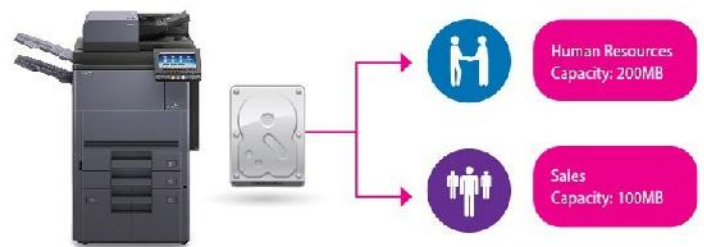
- KYOCERA Cloud Connect (Optional):** Retrieve and print files in Google Drive and Evernote[®], a cloud service provider, directly from any KYOCERA HyPAS-enabled MFPs. Users can even upload scanned files directly to Google Drive and Evernote[®] – directly from the MFP, without going through a computer.
- Support WiFi Direct:** Support IB-35 Wireless LAN (Optional), makes print/scan via AirPrint/Google Cloud Print/Mopria/KYOCERA Mobile Print/KYOCERA MyPanel much easier.



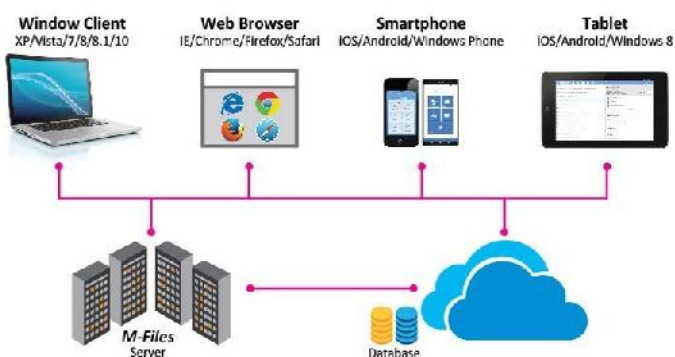


Control with Ease

- **Password Protection Setting:** Allow administrator to set Password Policy to limit user access to designated capacity.
- **Private Print:** Release print job at the device by entering a preset four-digit access code when making a print at KYOCERA KX Driver.
- With the aid of **Network Authentication**, IT Department can manage user authentication easily by incorporating with centralized Authentication Server (NTLM, Kerberos, KYOCERA Net Manager®).
- **FAX Memory Overwrite (Optional):** Erase FAX memory after sending or receiving for confidentiality.



- **M-Files (Optional):** Manage all information e.g. documents, projects and business processes etc and adds intelligence by combining it with information from other systems (like SharePoint, Salesforces and SAP). This ensures you always find what you need, no matter what system you are using.
- **Security Watermark:** Distinguish original from copies and provides protection for sensitive document against duplication.
- **KYOCERA Data Security Kit (Optional):** Encrypt data before storing in the hard drive and automatically overwrite all data stored in the hard drive when the data becomes unnecessary.





Eco-Conscious

Design for energy savings

- **Fast warm up:** With the new IH fuser, the warm up time is shorter and power consumption is less.
- **Weekly Timer:** Allow administrator to preset the machine on and off time to maximize power savings.
- **EcoPrint:** Flexible EcoPrint setting to consume less energy and toner.
- **Energy Saver:** 1w or less power consumption at Energy Saver Mode.

Protect the environment

- Leading Long-life Mega Surface Amorphous Silicon (a-Si) Drum , developer and replacement parts.
- Parts for Recycling.
- Non-toxic Materials.
- Quiet operation design for a comfortable Working Environment.



Eco Mark (Japan)



EcoLeaf Environmental Label (Japan)



Law on Promoting Green Purchasing (Japan)

KYOCERA Document Solutions has been actively promoting the acquisition of various environment labels, aiming to provide products that are safe and comfortable for our customers to use and have minimal environmental impact.

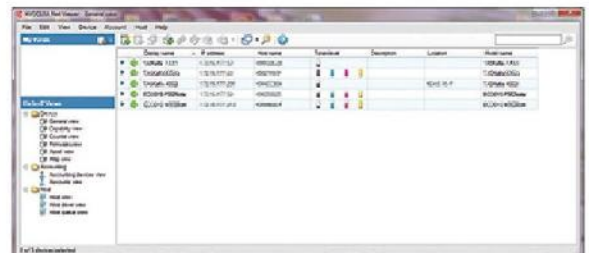
Instant Monitoring

Smart utilities for managed print and minimize related device management costs.

- **KYOCERA Command Center RX:** By using a web browser, the authorized administrator can access the built-in KYOCERA Command Center RX and check the operation status of the device, toner level, paper availability, as well as change settings related to security, network printing and advanced network setting etc.



- **KYOCERA Net Viewer:** A comprehensive network management tool used to monitor, maintain, and update up to 100 network printing devices locally and remotely. Through KYOCERA Net Viewer, administrators can simply install and update firmware on all KYOCERA connected devices while easily monitoring printed black/color pages, device configuration, accounting, toner usage, and alerts. By implementing KYOCERA Net Viewer, the manpower required to monitor connected devices is greatly reduced.



- **KYOCERA Net Manager (Optional):** Protect confidential data, manage & control the overall output (copy/print/scan) and get detailed reports. Users can keep an overview of personal printing jobs with web browser. It greatly simplifies scanning processes as it automatically displays a set of personalized options.

By adding the Card Authentication Kit (Optional) for KYOCERA Net Manager, you are able to swipe ID Card to get print document directly. User administrator can also set the IC Cards to allow quick and secure access with pre-defined user restrictions such as color output restrictions and output quota.



		Main Specifications		
Model		TASKalfa 7002i	TASKalfa 8002i	TASKalfa 8052ci
Main Function		Copy, Print, Scan, Fax (Optional)		
Writing Method		Semiconductor Laser		
CPU		T1024 (Quad Core) 1.2GHz		
Print Speed (A4) (Mono/Color)		70/ - ppm	80/ - ppm	80/70 ppm
Scanning Speed (A4) 300dpi	Simplex(Mono/Color)	120/120 ipm		
	Duplex(Mono/Color)	220/220 ipm		
Memory		Standard 4.5GB (Max. 4.5GB)		
SSD/HDD Capacity		SSD 8GB (Standard) / HDD 320GB (Standard)		
Warm Up Time		30 seconds or less		44 seconds or less
Paper Capacity	Standard	4,150 sheets [2 x 500 sheets (Cassette) + 2 x 1,500 sheets (Cassette) + 150 sheets (MPT)]		
	Maximum	7,650 sheets (Main Unit + 2 x 1,500 sheets PF-740(B) x1 + 500 sheets PF-7130 x1 + MPT)		
Paper Size	Cassette	Min. A5R - Max. 12" x 18"(304mm x 457mm)		
	MPT	Min. A6R - Max. 12" x 18"(304mm x 457mm) & Banner Print of 1,219mm		
Paper Weight	Cassette	60 - 256 g/m ²		
	MPT	60 - 300 g/m ²		
Duplex Printing		Paper size: A6R – 12" x 18" (304mm x 457mm); Paper weight: 60 - 256 g/m ²		
Output Capacity		Max. 420 sheets		
Control Panel		9 inch Color Touch LCD Panel		
Dimension (W x D x H) (Main Unit)		685mm x 801mm x 1,234mm (with DP)		
Weight (Main Unit)		Approx. 155 kg		Approx. 185 kg
Power Consumption (Standard configuration)	Copy/Print Mode	1,110W	1,170W	1,360W
	Stand-by Mode	100W		120W
	Energy Saver	1W		
Noise (ISO7779/ ISO9296)	Copy/Print Mode	75dB(A)	75dB(A)	75dB(A)
	Stand-by Mode	58dB(A)		
Copy Functions (Standard)				
Copy Size		Max. A3 (Ledger) – Min. A6R		
Resolution		600 x 600 dpi		
First Copy Time (Mono/Color)		5.2/ - seconds	4.7/ - seconds	4.8/5.9 seconds
Zoom Ratio	Manual	25% - 400% (1% per Step)		
	Pre-defined	5R5E		
Multiple Copy		1 – 9999		
Print Functions (Standard)				
Resolution		1,200 x 1,200 dpi; 4,800 x 1,200 dpi level		
PDL		PRESCRIBE, PCL6 (PCL-XL, PCL 5c), KPDL3 (Postscript 3 compatible), XPS, OpenXPS, PDF Direct Print Ver. 1.7, PPML		
First Print Out Time (Mono/Color)		5.8/ - seconds	5.4/ - seconds	4.9/6.1 seconds
Network Printing		TCP/IP, NetBEUI, FTP, Port 9100, LPR, IPP, IPP over SSL/TLS, WSD Print, Apple Bonjour		
Operating System Supported		Windows Server 2003, Windows Server 2008, Windows Server 2008 R2, Windows Server 2012, Windows Server 2012 R2, Windows Vista, Windows 7, Windows 8, Windows 8.1, Windows 10; Apple Macintosh OS X 10.5 or later; Linux		
Interface		USB 2.0 High Speedx1; Ethernet 10BASE-T/100BASE-TX/1000BASE-T; USB Host Interface (USB Host)x4; NFC TAGx1; 802.11 b/g/n/Wireless LAN/WiFi Direct (Optional)		
USB Memory Printing Format		TIFF, JPEG, PDF, XPS		
Mobile Printing		AirPrint, Mopria, KYOCERA Mobile Print		
Scan Functions (Standard)				
Color Selection		Auto Color (Color/Gray); Auto Color (Color/B&W); Full Color; Grayscale; Black & White		
Resolution		600dpi, 400dpi, 300dpi, 200dpi, 200x400dpi, 200x100dpi		
File Format		TIFF, JPEG, XPS, OpenXPS, PDF (MMR/JPG compression/High-compression PDF), PDF/A, Encrypted PDF, Searchable PDF		
Image Type Mode		Text, Photo, Text + Photo, Text (Fine Line), OCR		
Transmission Type		Scan to SMB; Scan to E-mail ; Scan to FTP or FTP over SSL; Scan to USB; TWAIN Scan; WSD Scan; WIA Scan		
Address Storage		2,000 addresses (Common address list), 500 groups (Group address list)		
Fax Functions (Optional)				
Original Size		Max. A3 (Ledger) - Min. A6 (Statement) / Scanning length: max. 1,600mm		
Coding Method		MMR, MR, MH, JBIG		
Transmission Speed		33.6 kbps		
Memory		170MB		
DUAL FAX / Network FAX		Yes		
Consumables & Options				
Toner Kit		TK-6720	TK-8720 (C/M/Y/K)	
Maintenance Kit		MK-6725	MK-8720 (A/B)	
Paper Feeder		PF-730(B): 500 sheets x2; PF-740(B): 1,500 sheets x2 (A4/Letter); PF-7120: 3,000 sheets Large capacity side deck (A4/Letter); PF-7130: 500 sheets Multimedia Tray and Paper Pass Unit		
Finisher		DF-7110: 4,000 sheets Finisher; PH-7C: Punch Unit for DF-7110; MT-730(B): 7 Bin Mailbox; BF-730: Booklet Folder; SH-12: Staple for DF-7110; SH-10: Staple for BF-730		
Fax System		Fax System 12		
Internet FAX		Internet FAX Kit(A)		
Data Security		Data Security Kit(E)		
Card Authentication		Card Authentication Kit(B)		
Gigabit Ethernet Board		IB-50: For Additional Network		
Wireless LAN Interface		IB-35 (802.11 b/g/n/Wireless LAN/WiFi Direct)		
Banner Paper Tray		Banner Guide(A)		
Numeric Key Pad		NK-7100		
Copy Tray		Copy Tray(D)		



Kyocera Document Solutions India Pvt. Ltd.
 Second Floor, Tower C, Centrum Plaza,
 Golf Course Road, Sector - 53
 Gurgaon - 122002 (Haryana)
 Tel : +91 124 467 1000
 Fax : +91 124 467 1001
 Email: contactus@did.kyocera.com
 Web: http://www.kyoceradocumentsolutions.co.in



KYOCERA Business Partner

*KYOCERA does not warrant that any specifications mentioned will be error-free. Specifications are subject to change without notice. Information is correct at time of going to press. All other brand and product names may be registered trademarks or trademarks of their respective holders and are hereby acknowledged.